

The new generation of Hydraulic Compactors



May 2012

Sustainable Productivity



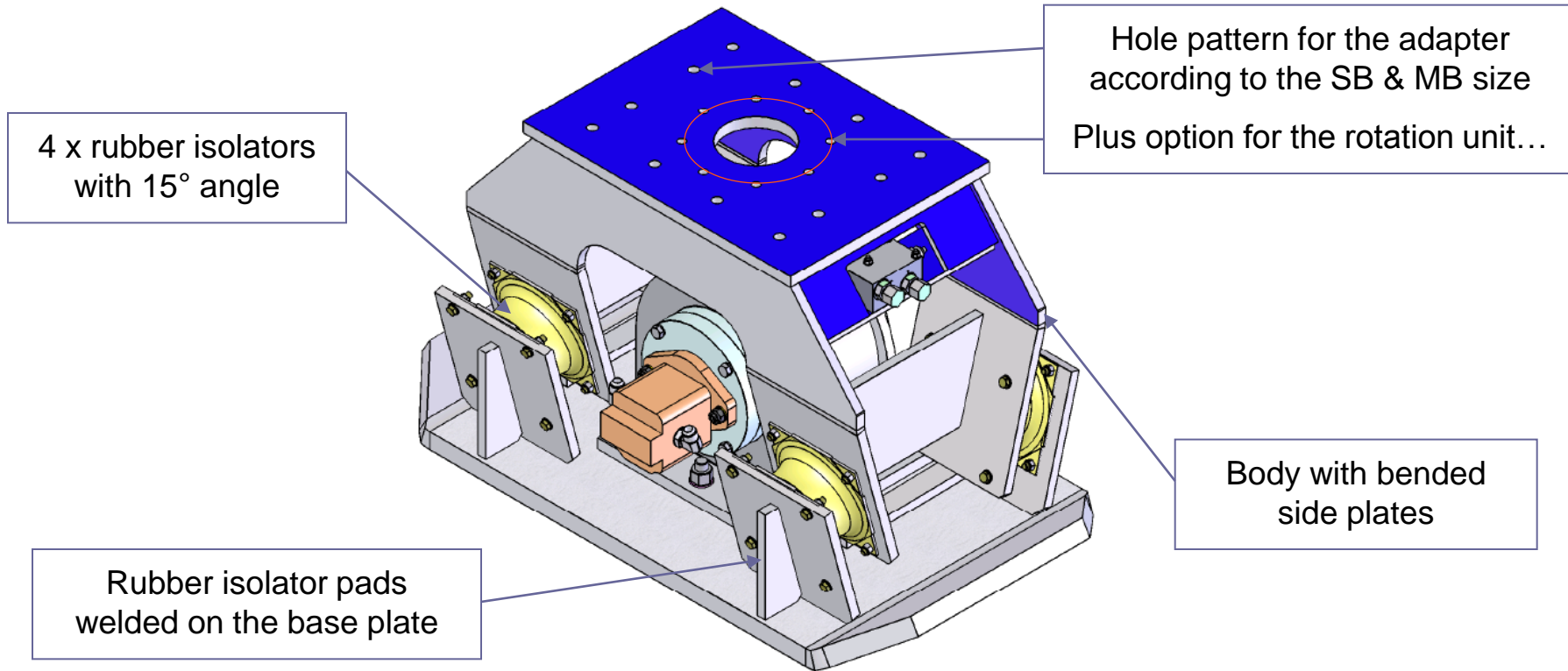
New range Hydraulic Compactors

Background

- Modification at the HC range
 - Changing of design
 - Position of the rubber isolators from vertical to 15° angled suspension
- More modern design with new options give a stronger competitive ability
 - Backfill blade
 - Rotation device

New range Hydraulic Compactors

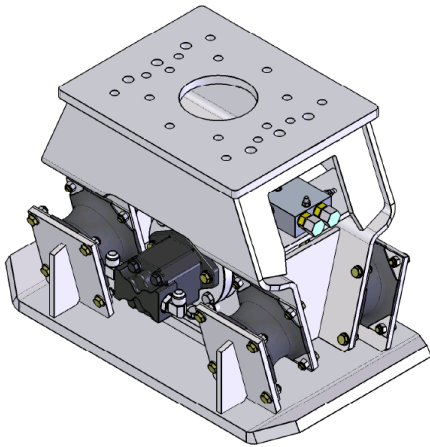
Design Solutions



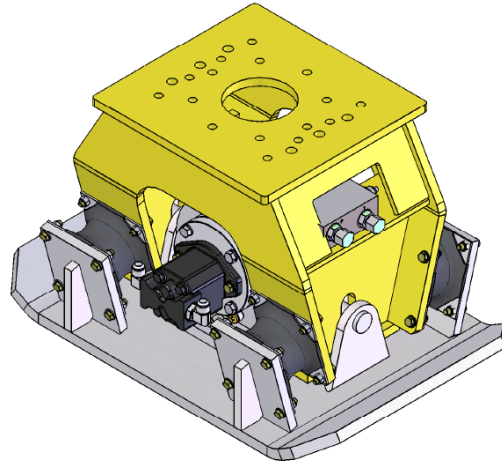
New range Hydraulic Compactors

Design Solutions

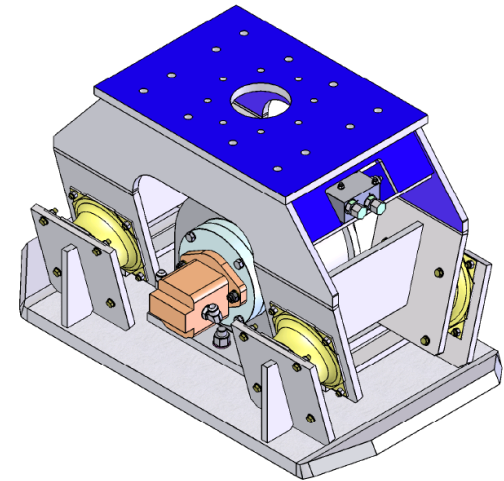
HC350



HC450

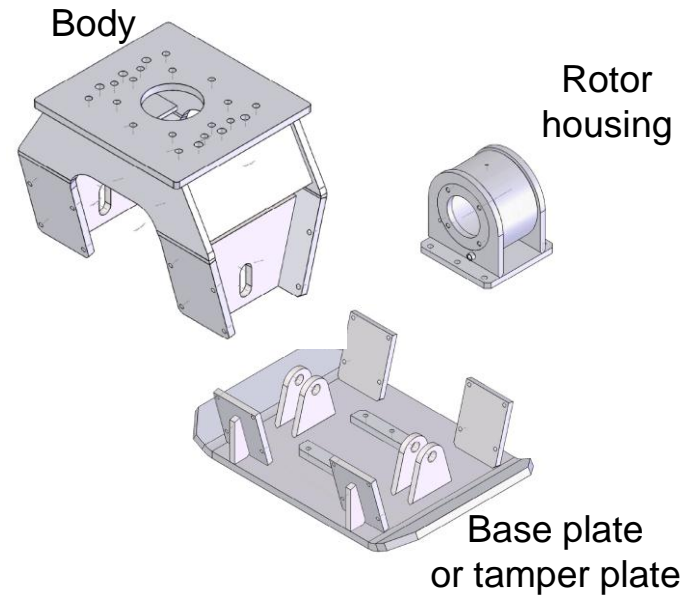
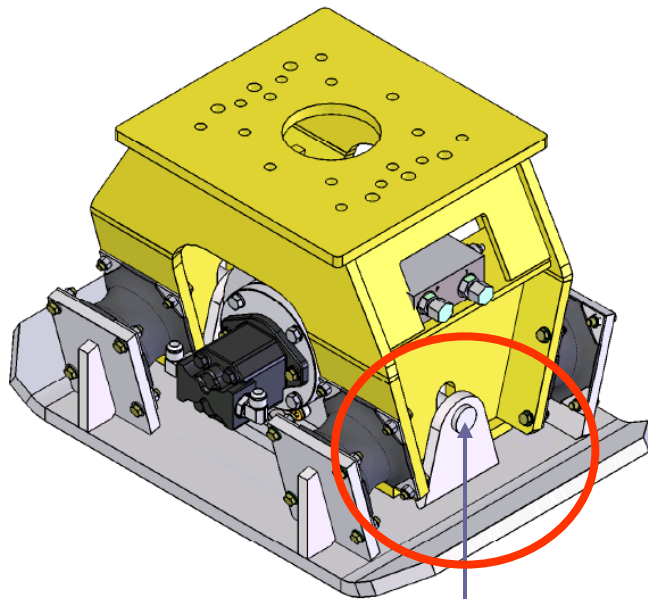


HC850



New range Hydraulic Compactors

Design Solutions

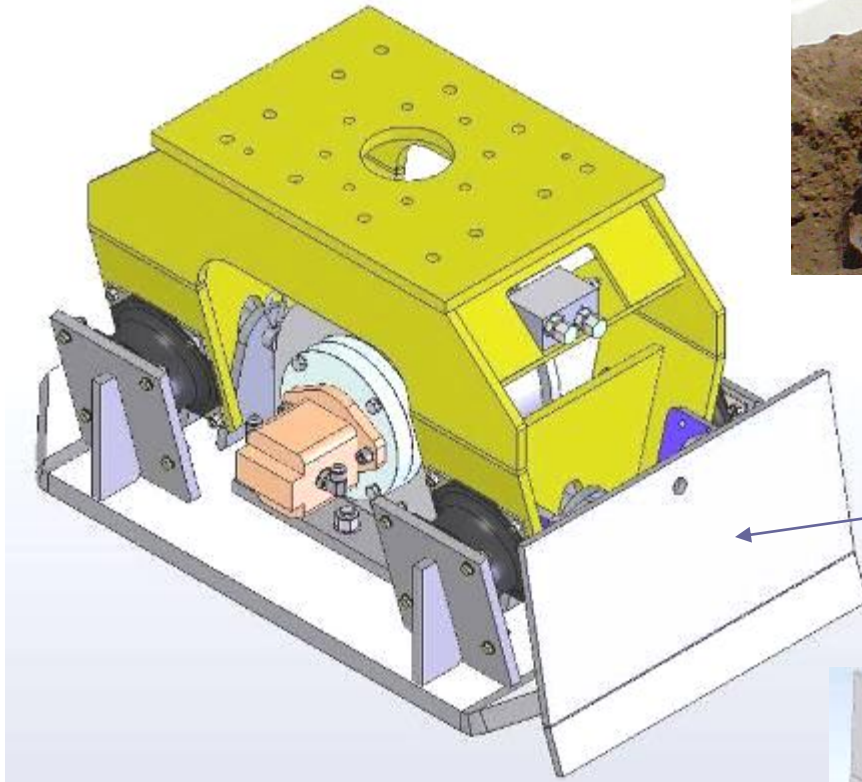


New mechanical stoppers (pins) to prevent isolators from tearing out during pulling out operation

Available on all new compactors except HC 150...

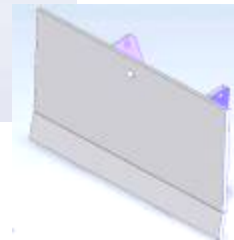
New range Hydraulic Compactors

Backfill blade - option



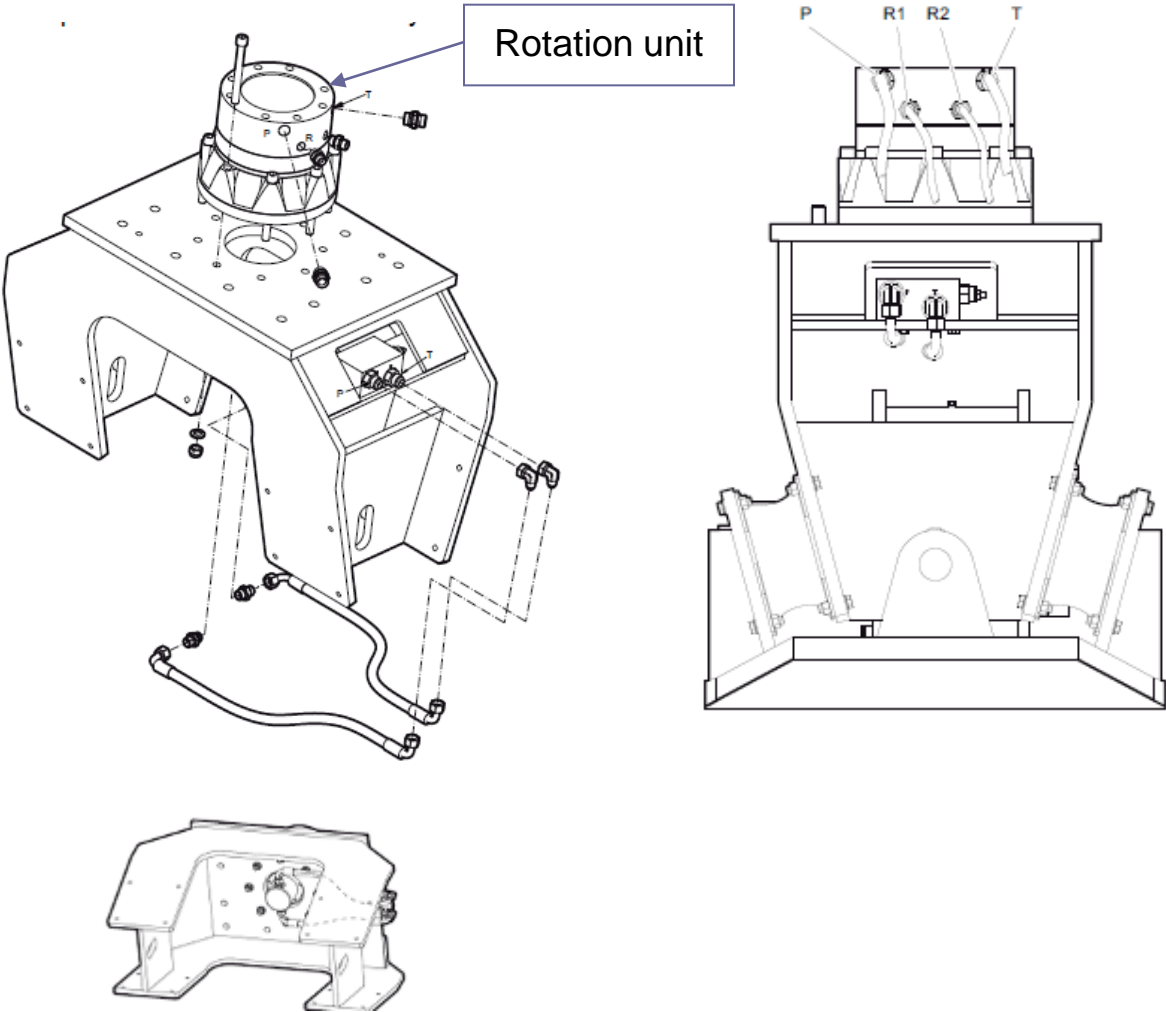
Backfill blade for grading and moving soil etc. material on site...

Available for HC 350 to HC 1055



New range Hydraulic Compactors

Rotation unit - option



New range Hydraulic Compactors

Overview



		<i>HC 103</i>	<i>HC 308</i>	<i>HC 409</i>	<i>HC 920</i>	<i>HC 2040</i>	<i>HC 2041</i>
New range		HC 150	HC 350	HC 450	HC 850	HC 1050	HC 1055
Carrier weight	t	1 - 3	3 - 8	4 - 9	9 - 20	20 - 40	20 - 40
Service weight	kg	160	320	430	880	1130	1135

New range Hydraulic Compactors

New HC 850



New range Hydraulic Compactors

Technical data

Hydraulic Compactor		HC 150	HC 350	HC 450	HC 850	HC 1050	HC 1055
Carrier weight	t	1 - 3	3 - 8	4 - 9	9 - 20	20 - 40	20 - 40
Service weight	kg	160	320	430	880	1130	1135
Vibrating force	t	1,4	2,3	3,6	7,3	10,5	11,4
Vibrating frequency	n/min	2100	2100	2200	2200	2200	2200
Plate dimensions (W X L)	mm	295 x 721	475 x 846	610 x 929	710 x 1.272	864 x 1.364	864 x 1.364
Plate coverage	m ²	0,17	0,31	0,40	0,68	0,90	0,90
Part No.		1826 1017 46	1826 1017 47	1826 1017 48	1826 1017 49	1826 1017 50	1826 1017 51

Hole pattern - Adapter	SB 102	SB 202	SB 202	MB 750 - MB 1000	MB 1200 - MB 1700	MB 1200 - MB 1700
------------------------	--------	--------	--------	---------------------	----------------------	----------------------

Option							
Rotation device		---	1826 1016 44	1826 1016 44	1826 1016 44	1826 1016 45	1826 1016 45
Connection kit		---	3376 6960 37	3376 6970 37	3376 6980 37	3376 6990 37	3376 6990 37
Backfill blade		---	3376 6961 08	3376 6971 08	3376 6981 08	3376 6991 08	3376 6991 08

New range Hydraulic Compactors

Parts & Services

Rubber isolator kit

No.	Description	Remark	Quantity	Part number
	Rubber isolator kit		1	3376 6920 32
17	Rubber isolator		4	3376 1007 30
18	Hexagon head bolt		32	3376 1001 70
19	Nut		32	3371 8167 02
20	Washer		32	3371 8167 05

Optional equipment

Description	Remark	Quantity	Part number
Cobra & Compactor Impact-Oil	1 x 1 l (0.22 gal) (0.26 US gal)	1	9234 0012 03
Cobra & Compactor Impact-Oil	20 x 1 l (0.22 gal) (0.26 US gal)	1	9234 0014 05
Adapter plate matching the carrier	Consult the Atlas Copco Customer Center/Dealer in your area.	1	-
Base plate with threaded inserts		1	3363 0997 97
Bolt kit		1	3363 0945 37
Base plate with through borings		1	3363 1006 95
Bolt kit		1	3363 0945 74
Allen key	19 mm for bolt kit	1	3360 2092 53
Backfill blade kit		1	3376 6981 08
Rotation device		1	1826 1016 44
Allen screw		8	-
Pair of locking rings		16	-
Rotor		1	-
Hexagonal nut		8	-
Connection kit for rotation device		1	3376 6980 37
Hydraulic hose		2	-
Fitting		2	-
Fitting		2	-
Fitting		2	-
Fitting		2	-

**Committed to
sustainable productivity.**



Atlas Copco

